

MAIN INDICATORS OF THE SINGAPORE ECONOMY

OVERALL ECONOMY

Real Gross Domestic Product
(Year-on-Year-Growth)



4Q21	1Q22
+6.1%	+3.7%

Gross Domestic Product
at Current Market Prices



4Q21	1Q22
\$138.5 billion	\$141.9 billion

PRICES

Consumer Price Index — All Items
(Year-on-Year Growth)



4Q21	1Q22
+3.7%	+4.6%

Domestic Supply Price Index
(Year-on-Year Growth)



4Q21	1Q22
+24.5%	+24.4%

LABOUR MARKET

Change in Employment
(Quarter-on-Quarter)



4Q21	1Q22
+54.6 thousand	+46.5 thousand

Overall Unemployment Rate



4Q21	1Q22
2.4%	2.2%

Value-Added per Actual Hour Worked
(Year-on-Year Growth)



4Q21	1Q22
+5.5%	+2.2%

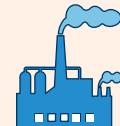
COSTS

Unit Labour Cost of Overall Economy
(Year-on-Year Growth)



4Q21	1Q22
+6.7%	+6.8%

Unit Business Cost of Manufacturing
(Year-on-Year Growth)



4Q21	1Q22
-5.2%	+1.2%

Unit Labour Cost of Manufacturing
(Year-on-Year Growth)



4Q21	1Q22
-1.9%	+3.8%

MERCHANDISE TRADE

Merchandise Exports



4Q21	1Q22
\$169,573 million	\$169,997 million
+26.9% Year-on-Year Growth	+18.8% Year-on-Year Growth

Merchandise Imports



4Q21	1Q22
\$152,969 million	\$153,079 million
+31.0% Year-on-Year Growth	+23.1% Year-on-Year Growth

SERVICES TRADE

Services Exports



4Q21	1Q22
\$80,500 million	\$80,521 million
+9.2% Year-on-Year Growth	+7.1% Year-on-Year Growth

Services Imports



4Q21	1Q22
\$80,207 million	\$77,671 million
+12.1% Year-on-Year Growth	+6.6% Year-on-Year Growth