

ECONOMIC

An illustration at the top of the page features various economic and industrial symbols. From left to right, it includes a cargo ship, a factory with smokestacks, a microscope, an airport control tower, and a bus. A grey line with a nozzle-like end connects the ship to the microscope, and another line connects the microscope to the control tower. An airplane is shown flying in the upper right corner.

SURVEY

An illustration below the word 'SURVEY' depicts modern technology and infrastructure. It features a gear, a magnifying glass, a skyscraper, a Ferris wheel, a satellite, a data center with a large dollar sign, and a computer monitor displaying a line graph. A smartphone is also shown next to the monitor.

OF **SINGAPORE**

SECOND QUARTER 2018

MTI MINISTRY OF TRADE
AND INDUSTRY
SINGAPORE

August 2018

Ministry of Trade and Industry
Republic of Singapore

website: www.mti.gov.sg
email: mti_email@mti.gov.sg

All rights reserved. No part of this publication may be reproduced, stored in a retrieval system or transmitted in any form or by any means, electronic, mechanised, photocopying, recording or otherwise, without the prior permission of the copyright holder.

CONTENTS

03

Main Indicators
of the Singapore Economy



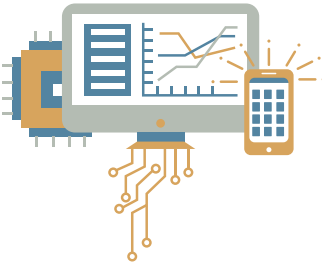
04

CHAPTER 1
The Singapore Economy



18

Box 1.1
Employment Dynamics of
Firms in Singapore: Young
Firms vs. Older Firms



24

CHAPTER 2
Sectoral Performance

36

Box 2.1
Economic Contribution of
Factoryless Goods Producing
Firms in Singapore

40

CHAPTER 3
Economic Outlook

44

FEATURE ARTICLE
Entrepreneurial Quality
and Growth Potential in
Singapore

