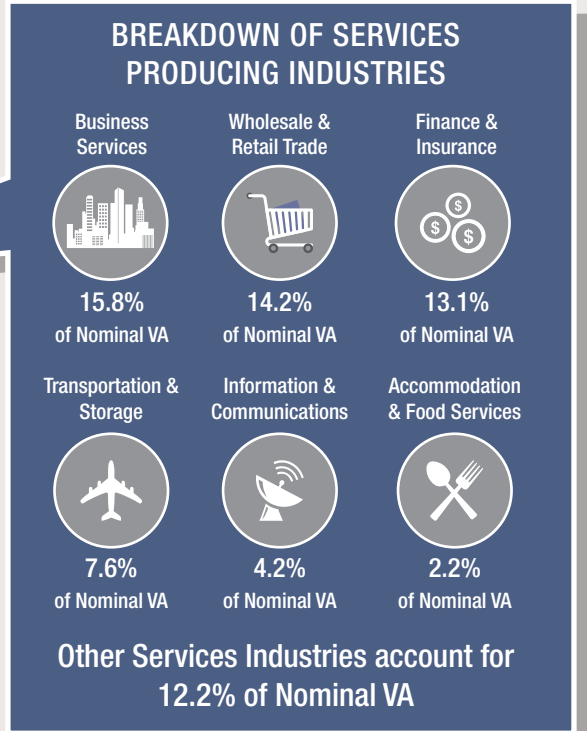
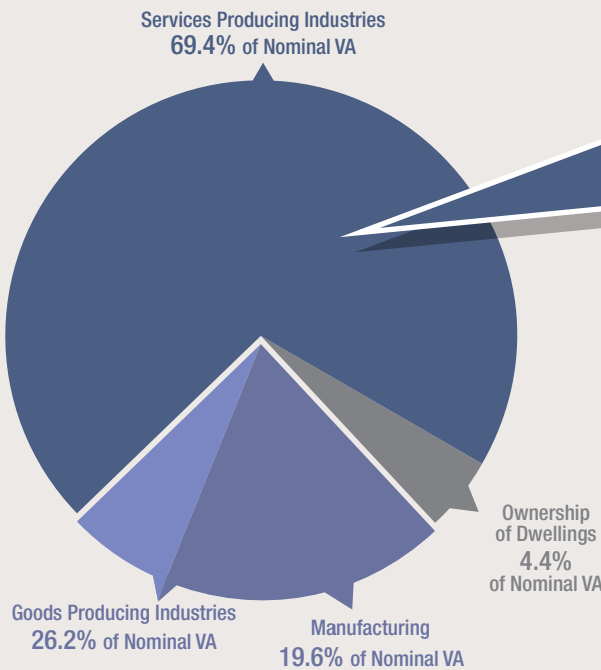


MAIN INDICATORS OF THE SINGAPORE ECONOMY

OVERALL ECONOMY

GDP at Current Market Price \$408.1 billion 2015 \$410.3 billion 2016		Real GDP (Year-on-Year-Growth) +1.9% 2015 +2.0% 2016		Per Capita GNI \$70,450 2015 \$70,828 2016	
---	--	--	--	--	--

STRUCTURE OF THE ECONOMY IN 2016



LABOUR MARKET

Employment (as at year end) 3,656.2 thousand 2015 3,672.6 thousand 2016
Unemployment Rate 1.9% 2015 2.1% 2016
Value-Added per Actual Hour Worked (Year-on-Year Growth) 1.0% 2015 1.4% 2016

COSTS

Unit Labour Cost of Overall Economy (Year-on-Year Growth) +3.6% 2015 +2.4% 2016
Unit Business Cost of Manufacturing (Year-on-Year Growth) +0.4% 2015 -8.5% 2016
Unit Labour Cost of Manufacturing (Year-on-Year Growth) +5.5% 2015 -4.5% 2016

PRICES

Consumer Price Index - All Items (Year-on-Year Growth) -0.5% 2015 -0.5% 2016
Domestic Supply Price Index (Year-on-Year Growth) -15.3% 2015 -6.9% 2016
Singapore Manufactured Products Price Index (Year-on-Year Growth) -9.2% 2015 -5.5% 2016

MAIN INDICATORS OF THE SINGAPORE ECONOMY

MERCHANDISE TRADE



SERVICES TRADE



TOP 5 TRADING PARTNERS AND SHARE OF TOTAL MERCHANDISE TRADE IN 2016

