



# Supporting Our Businesses

For a Vibrant and  
Innovative Economy

— From Startup to Scale-up —

In order to remain relevant and successful, our companies must press on with transformation in order to ride the wave of change created by technological developments and demographic shifts. The Government will support all companies in their transformation efforts.

This booklet outlines the resources available to companies that are ready to embark on their transformation journey. From startups (*page 2*) to businesses at other stages of growth, the Government will support all our companies to strengthen capabilities in **innovation** and **productivity**, **internationalisation** and/or **training and reskilling workers** (*pages 4 - 11*) to prepare them for jobs in the future economy. Financing is also available to support companies' expansion needs (*page 3*).

Together, we will build a brighter future.



# Startups

Startups can tap on the Startup SG suite of schemes for support.



## Startup SG Equity

- For startups seeking Government co-investment

## Startup SG Founder

- For first-time entrepreneurs seeking early-stage funding support, mentorship and business networks

## Startup SG Tech

- For startups seeking early-stage funding to fast-track commercialisation of scalable in-house solutions. Supports Proof-of-Concept (POC) and Proof-of-Value (POV) for commercialisation of innovative technologies

For more information, visit  
[www.startupsg.net](http://www.startupsg.net)

## Tax Exemption Scheme

### YA 2020 onwards

- 75% exemption on the first S\$100,000 of normal chargeable income; and,
- 50% exemption on the next S\$100,000 of normal chargeable income

### YA 2019 and before

- Full exemption on the first S\$100,000 of normal chargeable income; and,
- 50% exemption on the next S\$200,000 of normal chargeable income

# Financing Support

Find the right financing tool to meet your expansion needs.



## Enterprise Financing Scheme (EFS)<sup>1</sup> **New**

- Financing support to meet business needs at every stage of growth
- EFS will cover six different areas – working capital, fixed assets, venture debt, trade, projects, and mergers & acquisitions
- Stronger support for younger companies and SMEs

## Internationalisation Finance Scheme (IFS)<sup>2</sup>

- Access up to S\$30 million in credit facilities to finance overseas ventures
- Default risks undertaken between Enterprise Singapore and Participating Financial Institutions (PFIs)

## Internationalisation Finance Scheme (Non-recourse Finance)

- Catalyse non-recourse project financing for Singapore companies to participate in more regional small-scale infrastructure project opportunities

## SME Working Capital Loan<sup>3</sup> **Extended**

- Get access to unsecured working capital financing of up to S\$300,000 to support daily operations

<sup>1</sup> The Enterprise Financing Scheme (EFS) will be launched in Oct 2019.

<sup>2</sup> The IFS will become part of the Enterprise Financing Scheme when it is launched in Oct 2019.

<sup>3</sup> The SME Working Capital Loan will become part of the Enterprise Financing Scheme when it is launched in Oct 2019.

# Jobs and Skills

Support workers in their skills training so that they remain relevant with changing needs of the industry.



## Career Support Programme **Extended**

- Wage support for employers to hire eligible Singaporeans, including mature workers who are retrenched, or are long-term unemployed

## Capability Transfer Programme

- Plug capability gaps in the local workforce by engaging foreign specialists to transfer capabilities to local workers, or sending local workers for training abroad, with funding support and work pass facilitation

## Career Trial

- Try out job seekers seeking new careers through a short-term work stint, with training and salary support

## Enterprise Development Grant (EDG)

**Enhanced**

- Please refer to Productivity Growth section

## HR Portal

- Upgrade HR capabilities from employee engagement to succession planning, with self-help guides and tools through an interactive digital platform

[www.hrportal.sg](http://www.hrportal.sg)

## Professional Conversion Programmes (PCP), Place-and-Train

- Receive training and salary support to hire and reskill job seekers

## Productivity Solutions Grant (PSG)

**Enhanced**

- Get access to a wide range of easy-to-adopt IT solutions and equipment to enhance business processes
- **NEW** Access a training subsidy to invest in workers' skills and development (more details to be announced later)
- Enhanced support of up to 70% to continue till end-FY22

## SkillsFuture Earn and Learn Programme

- Groom and retain suitable fresh graduates from ITEs and Polytechnics through structured career development programmes

## SkillsFuture Leadership Development Initiative

- Acquire leadership competencies and critical experiences

## SkillsFuture Work-Learn Bootcamp

- Attract and hire fresh graduates and mid-career individuals who will be trained with behavioural and technical skills for in-demand job roles

## P-Max

- Funding support for SMEs to better recruit, manage and retain newly-hired PMETs

## Wage Credit Scheme

- Receive co-funding for qualifying wage increases for Singaporean employees earning a gross monthly wage of up to S\$4,000



# Technology and Innovation

Leverage technology to create new products and services to seize new growth opportunities.

## Centres of Innovation (COIs) **Expanded**

- Develop and test new technology products by leveraging on facilities, consultancy, training, and technical services in specific sectors

## Digital Services Lab **New**

- Collaborate with IMDA, industry partners, research institutes, and institutes of higher learning to co-develop digital solutions to address sector-wide opportunities in the services industry

## Enterprise Development Grant (EDG) **Enhanced**

- Please refer to Productivity Growth section

## Innovation Agents Pilot **New**

- Be guided by innovation mentors who will advise on the development of innovation strategies and connect businesses to technology and business partners

## Intellectual Property Intermediary (IPI)

- Online marketplace and consultancy for companies to connect with providers of suitable technology IP for business needs



## Intellectual Property (IP) Schemes

- Get access to programmes including IP audit, IP strategy advisory, IP analytics and business/legal clinics to accelerate translation of technologies and brands to the market

## Open Innovation Platform (OIP)

- Get matched to problem-owners or solution providers to collaborate and tackle business needs in different sectors through digital solutions.

## Operation and Technology Roadmap (OTR) Programme

- Get assistance in developing technology roadmaps aligned to business strategies and goals

## PACT Programme

- Collaborate with other businesses to build capabilities, innovate and pursue global opportunities. Funds up to 70% of qualifying activities

## Tech Access

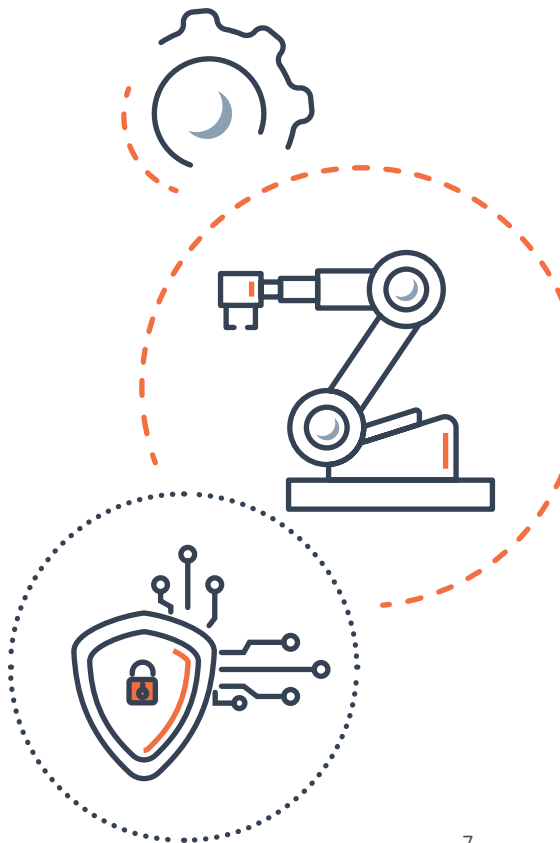
- Get access to a comprehensive suite of A\*STAR's advanced manufacturing equipment, under the guidance of technical experts

## Tech Depot

- Get access to technology and digital solutions through the SME Portal and choose from a list of readily adoptable technology solutions

## Technology for Enterprise Capability Upgrading (T-Up) Programme

- Get access to talent from A\*STAR's Research Institutes and build in-house R&D capabilities





# Internationalisation

Venture overseas and seize opportunities from the growing markets around us.

## Double Tax Deduction for Internationalisation (DTDi)

- 200% tax deduction on the first S\$150,000 of qualifying internationalisation expenses for each YA, without the need for prior approval from ESG or STB from YA 2019 onwards

## Enterprise Development Grant (EDG)

**Enhanced**

- Please refer to Productivity Growth section

## Enterprise Singapore Overseas Centres

- Tap on the support at over 35 international locations to generate new business leads, find business partners and acquire new technologies and capabilities

## Global Innovation Alliance (GIA)

- Gain access to overseas partners for co-innovation and market expansion



## Global Ready Talent Programme (G RTP) New

- Build a pipeline of global-ready talent through overseas internships and overseas management associate (MA) programmes

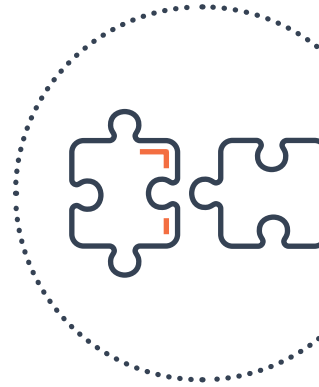


## Market Readiness Assistance (MRA)

- Funds up to 70% for overseas market set-up, identification of overseas business partners and overseas market promotion

## Plug & Play Network (PPN)

- Tap on in-market partners in China, Southeast Asia, India and UAE for market insights, business matching and co-working space options



## Tariff Finder

- Enjoy tariff savings for easier market access through Singapore's Free Trade Agreements using the Tariff Finder

[www.enterprisesg.gov.sg/FTA](http://www.enterprisesg.gov.sg/FTA)



# Productivity Growth

Adopt automation and productivity solutions and build up digital capabilities to increase efficiency.

## Automation Support Package (ASP) *Extended*

- Benefit from grant, tax and loan support to defray the cost of large-scale deployment of automation solutions

## Enterprise Development Grant (EDG) *Enhanced*

- Upgrade business capabilities, innovate or venture overseas
- Scheme supports projects in three key categories - core capabilities, innovation and productivity, and market access
- Enhanced support of up to 70% to continue till end-FY22

## Lean Enterprise Development Scheme

- Access grants and transitional foreign manpower support to transform to become more manpower-lean

## Productivity Solutions Grant (PSG) *Enhanced*

- Please refer to Jobs and Skills section



## SME Centres

- Get free one-to-one diagnosis and advisory session with SME Centres' Business Advisors

## SMEs Go Digital Programme *Expanded*

- Use the Industry Digital Plan (IDP) for a step-by-step guide on the digital solutions to adopt at every stage of business growth. IDPs for more sectors will be introduced.
- Adopt from a wider range of pre-approved digital solutions that include AI, cybersecurity and cloud solutions with grant support (such as Productivity Solutions Grant)
- For new companies, get a quick start with Start Digital Pack and enjoy costs waived for six months

## SME Portal

- First stop for useful business information, self-help tools, grants, tech solutions, events and other resources

[www.smeportal.sg](http://www.smeportal.sg)



# SME Centres

Companies that wish to embark on the journey of transformation may approach the SME centres below for assistance.

## **SME Centre@Ang Mo Kio**

Ang Mo Kio Community Centre  
795, Ang Mo Kio Avenue 1  
#03-03, Singapore 569976  
Tel: +65 9457 2265  
Email: central@smecentre-sccci.sg

## **SME Centre@ASME**

167, Jalan Bukit Merah  
#03-13, Tower 4, Singapore 150167  
Tel: +65 6513 0388  
Fax: +65 6513 0399  
Email: enquiries@smecentre-asme.sg

## **SME Centre@Central**

HDB Hub BizThree  
490, Lorong 6 Toa Payoh  
#07-11, Singapore 310490  
Tel: +65 6715 7580  
Email: central@smecentre-sccci.sg

## **SME Centre@Changi Simei**

Changi Simei Community Club  
10, Simei Street 2  
Singapore 529915  
Tel: +65 6513 0388  
Fax: +65 6513 0399  
Email: changisimei@smecentre-asme.sg

## **SME Centre@Little India**

Little India Arcade  
48 Serangoon Road  
#01-22, Singapore 217959  
Tel: +65 6508 0149  
Email: littleindia@smecentre-sicci.sg

## **SME Centre@NorthEast**

Our Tampines Hub  
51 Tampines Ave 4  
#04-31, Singapore 529684  
Tel: +65 6513 0388  
Fax: +65 6513 0399  
Email: northeast@smecentre-asme.sg

## **SME Centre@NorthWest**

Woodlands Civic Centre  
900, South Woodlands Drive  
#06-01, Singapore 730900  
Tel: +65 6826 3020  
Fax: +65 6826 3021  
Email: northwest@smecentre-smf.sg

## **SME Centre@SCCCI**

Trade Association Hub  
9, Jurong Town Hall Road  
#03-18, Singapore 609431  
Tel: +65 6337 8381  
Email: enquiry@smecentre-sccci.sg

## **SME Centre@SICCI**

SICCI Building  
31, Stanley Street  
Singapore 068740  
Tel: +65 6508 0147  
Fax: +65 6223 1707  
Email: sme@smecentre-sicci.sg

## **SME Centre@SMCCI**

15, Jalan Pinang  
Singapore 199147  
Tel: +65 6293 3822  
Email: advisory@smecentre-smcci.sg

## **SME Centre@SMF**

SMF House  
2985, Jalan Bukit Merah  
Singapore 159457  
Tel: +65 6826 3020  
Fax: +65 6826 3021  
Email: query@smecentre-smf.sg

## **SME Centre@SouthEast**

1, Engku Aman Turn  
#03-02, Wisma Geylang Serai  
Singapore 408528  
Tel: +65 6513 0388  
Fax: +65 6513 0399  
Email: southeast@smecentre-asme.sg

## **SME Centre@SouthWest**

The JTC Summit  
8, Jurong Town Hall Road  
#26-06, Singapore 609434  
Tel: +65 6316 1616  
Fax: +65 6316 7250  
Email: southwest@smecentre-smf.sg

# Centres of Innovation

Centres of Innovation (COIs) were set up in institutes of higher learning and public research institutes (RIs) to enhance SMEs' technology innovation. They provide facilities, consultancy, training, and technical services for SMEs to develop and test technology projects in specific sectors.

## **Centre of Innovation for Complementary**

### **Health Products**

Temasek Polytechnic  
Ms Sukhpreet Kaur  
Tel: 6780 4280  
Email: coi-chp@tp.edu.sg

## **Precision Engineering Centre of Innovation**

Singapore Institute of Manufacturing Technology,  
A\*STAR  
Mr Peter Shi  
Tel: 6590 3152  
Email: zfshi@simtech.a-star.edu.sg

## **Centre of Innovation for Electronics and IoT**

Nanyang Polytechnic  
Mr John Fung  
Tel: 6550 0978  
Email: john\_fung@nyp.edu.sg

## **Centre of Innovation for Supply Chain**

**Management**  
Republic Polytechnic  
Mr Edmund Chan  
Tel: 9232 0228  
Email: coi-scm@rp.edu.sg

## **Environmental and Water Technology Centre of Innovation**

Ngee Ann Polytechnic  
Ms Ida Kwan  
Tel: 6460 8168  
Email: Ida\_KWAN@np.edu.sg

## **Food Innovation Resource Centre**

Singapore Polytechnic  
Mr Zen Tan  
Tel: 6870 4619  
Email: zen\_tan@sp.edu.sg

## **Marine and Offshore Technology Centre of Innovation**

Ngee Ann Polytechnic  
Mr Ang Yee Kiang  
Tel: 6460 8594  
Email: angeekiang@np.edu.sg

## **Materials Centre of Innovation**

Institute of Materials Research and Engineering,  
A\*STAR  
Dr Leong Yew Wei  
Tel: 6874 3326  
Email: leongyw@imre.a-star.edu.sg

For more information, please contact MTI at [mti\\_email@mti.gov.sg](mailto:mti_email@mti.gov.sg) /  
Enterprise Infoline at [enquiry@enterprisesg.gov.sg](mailto:enquiry@enterprisesg.gov.sg)  
or refer to [www.smeportal.sg](http://www.smeportal.sg).